

# Timeline 8 Steps

(29 Unique Slides)

Professional Template with Unique and Clean Concepts, Fresh Update

**Main package folder contains:**

**1 – Timeline 8 Steps Files** (Contains 1 Premade Templates with Two Aspect Ratio (16:9 + 4:3).

**2 – 102 Color Themes** (Please check below to know how to install themes)

**3 – Template and Themes Guide** (To help you find what color theme you want to work on)

**4 – Icon Set**

**How to use this template:**

*Install the Fonts before opening the template*

Font info

Roboto Font (<https://www.fontsquirrel.com/fonts/roboto>)

**How to install Theme Colors and add them to your PowerPoint?**

- 1- Open "*Theme Colors*" folder.
  - 2- *Select* all XML files in "*Theme Colors*" folder, *Copy* them.
  - 3- *Paste* all XML files into your PowerPoint Theme colors folder.  
*\*(Theme Colors folder path for each System you use)*
  - 4- **For Windows XP:**  
C:\Documents and Settings\[*your user name*]\Application Data\Microsoft\Templates\Document Themes\Theme Colors
  - 5- **For Windows vista:**  
C:\Users\[*your user name*]\AppData\Roaming\Microsoft\Templates\Document Themes\Theme Colors
  - 6- **For Windows 7:**  
C:\Users\[*your user name*]\AppData\Roaming\Microsoft\Templates\Document Themes\Theme Colors
  - 7- **Windows 8, Windows 8.1:**  
C:\Users\[*your user name*]\AppData\Roaming\Microsoft\Templates\Document Themes\Theme Colors  
**OR Add them to:** C:\Program Files\Microsoft Office\Document Themes 15\Theme Colors
  - 8- **For Mac OS:**
- 9- Users > [*your user name*] > Library > Application Support > Microsoft > Office > User Templates > My Themes > Theme Colors folder.

The Library folder is not visible by default in some Mac OS, you can make it visible by:

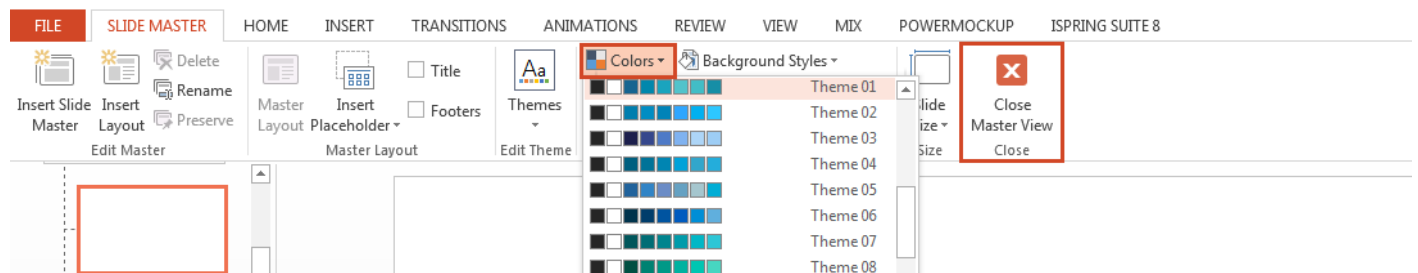
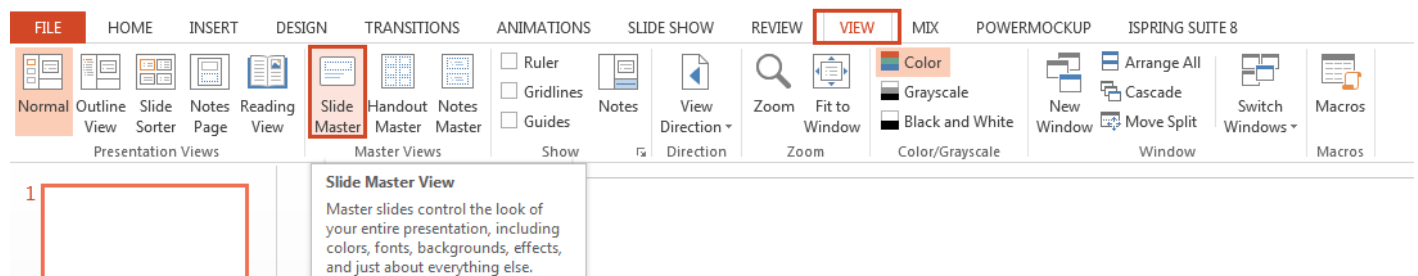
Run Terminal application (You'll find Terminal in the Utilities folder inside the Applications folder), paste this command into the Terminal window and then press Return: `chflags nohidden ~/Library/`

You can then quite the Terminal Application and you will find the Library folder where you expected it in the User directory.

\*After adding the color themes to your PowerPoint, You can simply apply any theme on your PowerPoint slides and the new theme will apply on all slides at once.

## How to change Theme Color?

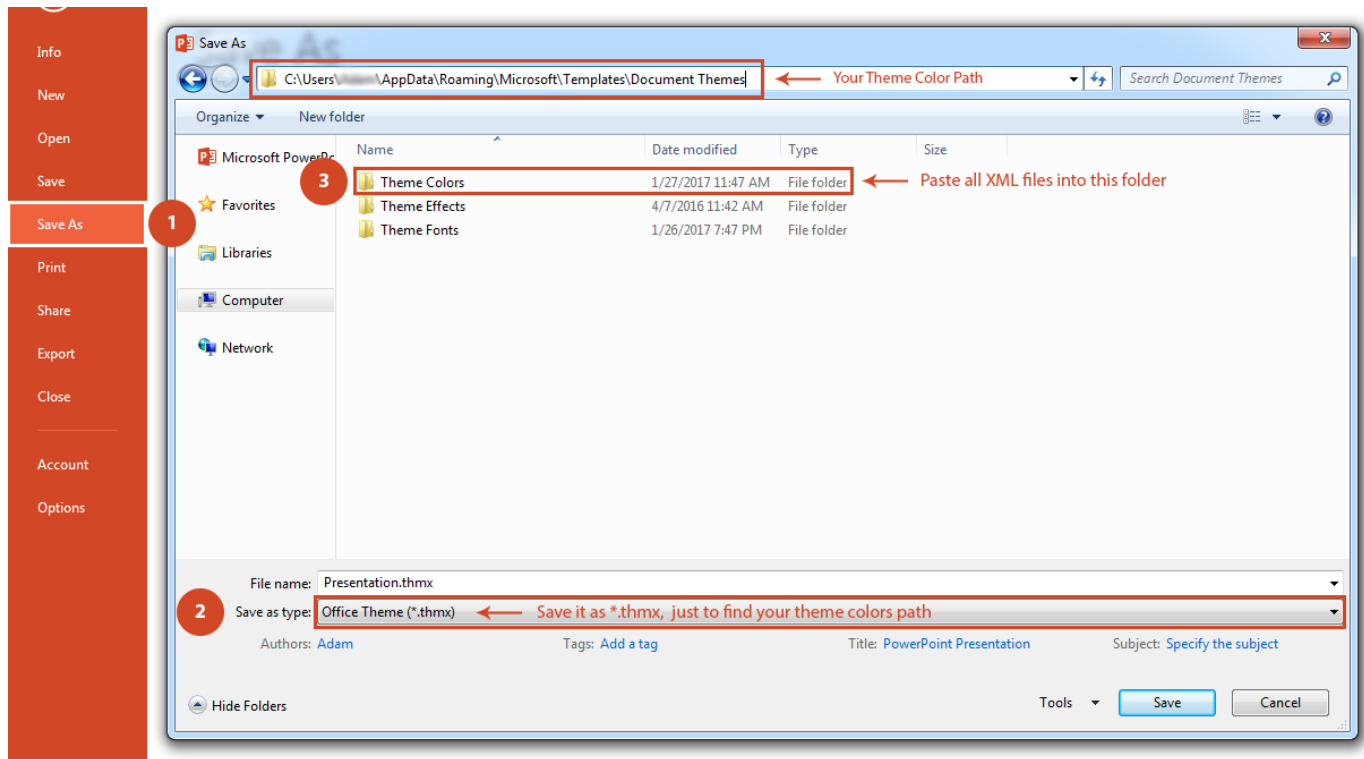
Go to **View** Tab ---> **Slide Master** ---> **Colors** ---> Pick the theme you want then close Master View



If you can't find the path of your theme folder, you can try this way

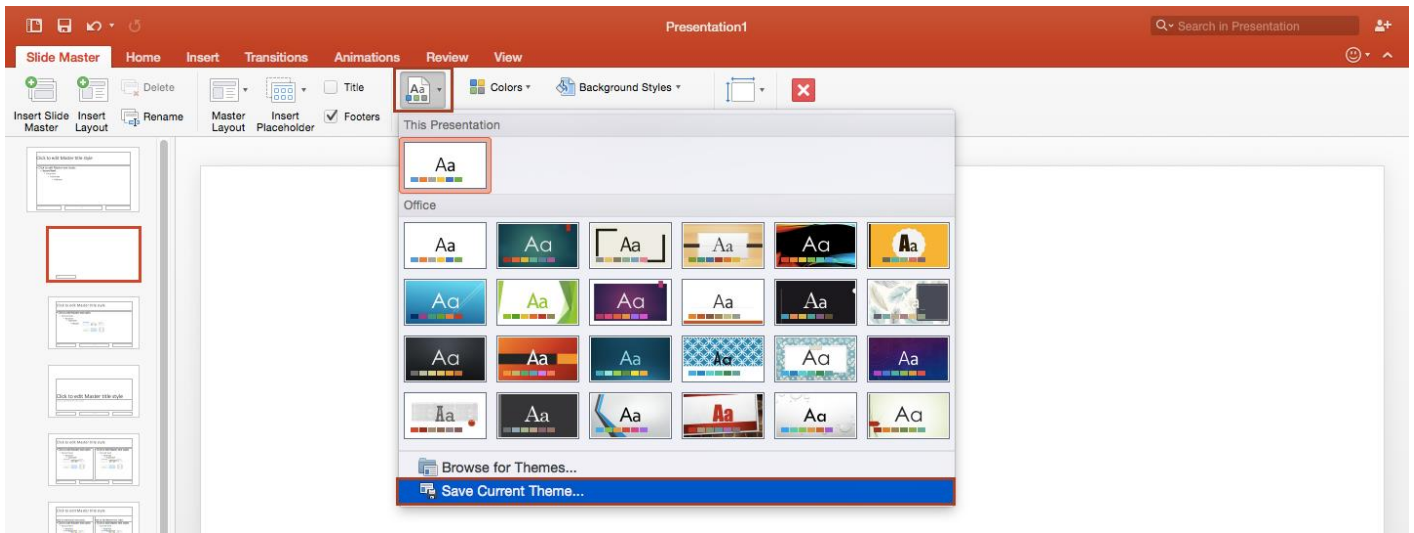
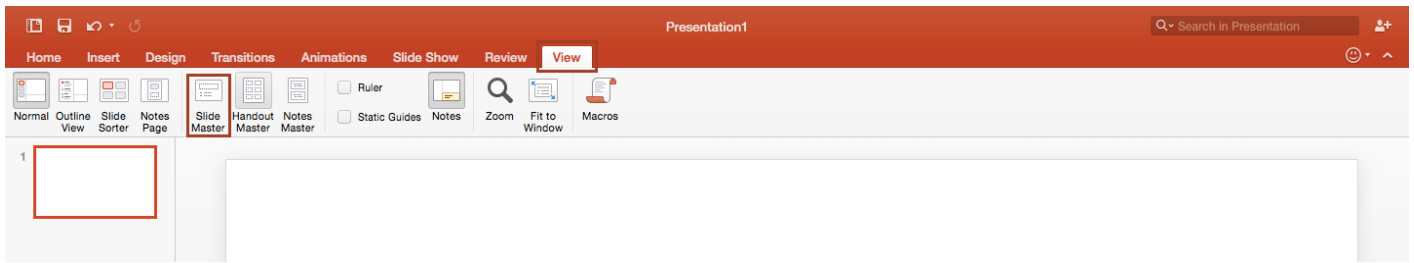
## 1- For PowerPoint on PC:

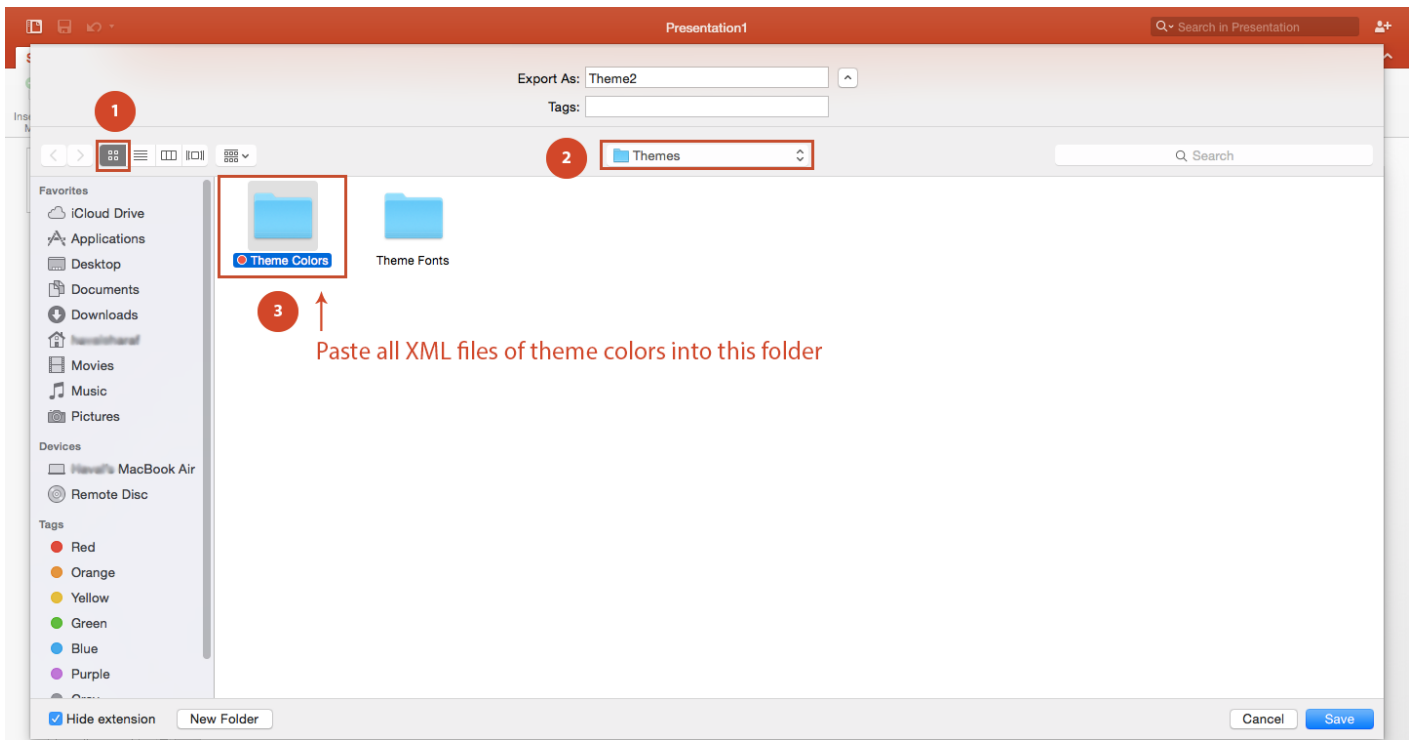
Open PowerPoint, any file, then try to save it as *\*.thmx*, just to find your theme colors path. You will find path to your Theme Colors, as shown in the image below.



## 2- For PowerPoint on Mac OS:

Open PowerPoint, any file, then Go to **View Tab** ---> **Slide Master** ---> **Themes** ---> **Save Current Theme** just to find your theme colors path. You will find path to your Theme Colors, as shown in the images below.





\*After adding the color themes to your PowerPoint, You can simply apply any theme on your PowerPoint slides and the new theme will apply on all slides at once.

## How to change Theme Color?

Go to **View Tab** ---> **Slide Master** ---> **Colors** ---> Pick the theme you want then close Master View

